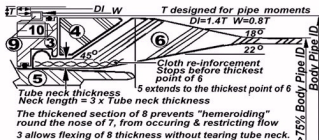


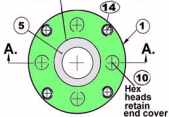
"PUG/XL-RF" PumpGuard "Clear-Flo" for in place flush.

Pulse Damper for viscous liquids & slurries in suction and LP discharge lines

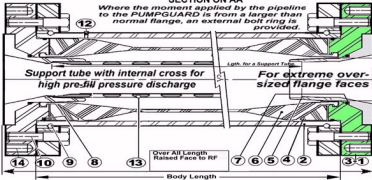
Extra Charge Special version



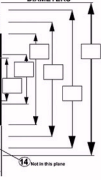
Standard Raised Face Per ANSI B16.5 With tapped stud bolt holes. "RF"



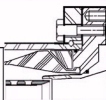
SECTION ON AA



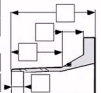
DIAMETERS



For use where pcd of stud bolts causes circle round OD of tapped stud holes to fall outside stop diameter of end plug



LENGTH / DEPTHS



CONNECTION OPTIONS Extra. Through hole bolting and addition of threads by flanged spools

+FLG



Where standard stud bolts must pass THROUGH additional flanges are provided

+TD



Where a thread is required, a flanged thread is bolted on.

ITEM	Pt. Nbr.	DESCRIPTION	MTRL HT / CAST Nbr.	CUSTOMER
1	+	TAPPED BOLT HOLE FLANGE / END CVR.	PVQ CS	CUSTOMER REF.
2		END PLUG WITH SEAL GROOVES	PVQ CS	3rd. PARTY QA. EXTRA
3		BODY PIPE WITH GROOVED ENDS	106B	DOCUMENTATION LEVEL. EXTRA
4		CORNER FILLING RING	Rubber	WELDING W: NONE
5		ANCHOR TUBE W/ SEAL & RAISED FACE	316SS	QUANTITY
6		FLEX-TUBE WITH THICKENED ENDS	Elastomer	SHOP / JOB Nbr.
7		ANCHOR TUBE "O" SEAL	E.N.or V	WEIGHT(Est.)
8		END PLUG "O" SEAL	Epdm	ISSUED BY M.P.
9		SEGMENTAL LOCK RING	106	ISSUED DATE Feb 2002
10		FLANGE / CVR. HOLDING SOCKET SCREW	Gr10	CHECKED BY D.B.
11		FOAM CUSHION FOR SUCTION JOBS	Urethane	FILE NAME PugXLrf.bmp
12		GAS CUSHION FILLING VALVE	304ss	SCALE Not To Scale.
13		PERFORATED SUPPORT TUBE	J04Lss	Rev. #
14		STUD BOLT HOLES PER ANSI B 16.5		DIMENSIONS ARE mm
15		STUD BOLT HOLES PER DIN. DNPN		unless otherwise stated

Reading the Pt. Nbr. To Suit Specific Pump Type / PumpGuard / With Perma-Cushion / or With Perforated Support Tube / Number of in3 capacitance Vol or *Liters / Lbs In2 design pressure / Connections / welded materials 105#-110cs, M90-C-Progressive Control "PUG" / "PEC" / "P" / "R" / "S" or 4 L, 3485 or 3724, 12250 or 20644, Example 150# - 150 psi / 10" 3069 - 310-316/10L 31

PULSE GUARD Inc.
For the Americas --(01)910-270-2737
BW & Color Fax, --(01)910-270-0320

Drawing / Pt. Nbr. Page 4 of 5

AN ASSOCIATION WITH OTHER PACKER LICENSEES